



## NCERT Class VII Science Solutions: Chapter 1-Nutrition in plants Part 3

### Question 14:

Wheat dough if left in the open, after a few days, starts to emit a foul smell and becomes unfit for use. Give reason.

### Answer:

Carbohydrates in wheat dough encourage growth of yeast and other saprophytic fungi which break down carbohydrates, and emit a foul smell.

### Question 15:

Sunlight, Chlorophyll, Carbon dioxide, Water and minerals are raw materials essential for photosynthesis. Do you know where they are available? Fill in the blanks with the appropriate raw materials.

1. Available In the plant: \_\_\_\_\_
2. Available in the soil: \_\_\_\_\_
3. Available in the air: \_\_\_\_\_
4. Available during day: \_\_\_\_\_

### Answer:

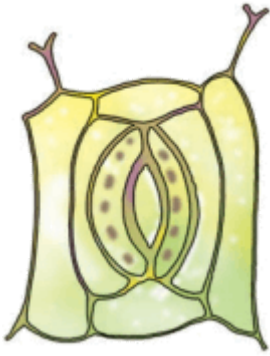
1. Available In the plant: **chlorophyll**
2. Available in the soil: **water, minerals**
3. Available in the air: **carbon dioxide**
4. Available during day: **sunlight**

### Question 16:

Observe the diagram given as Figure and label the following terms given in the box.

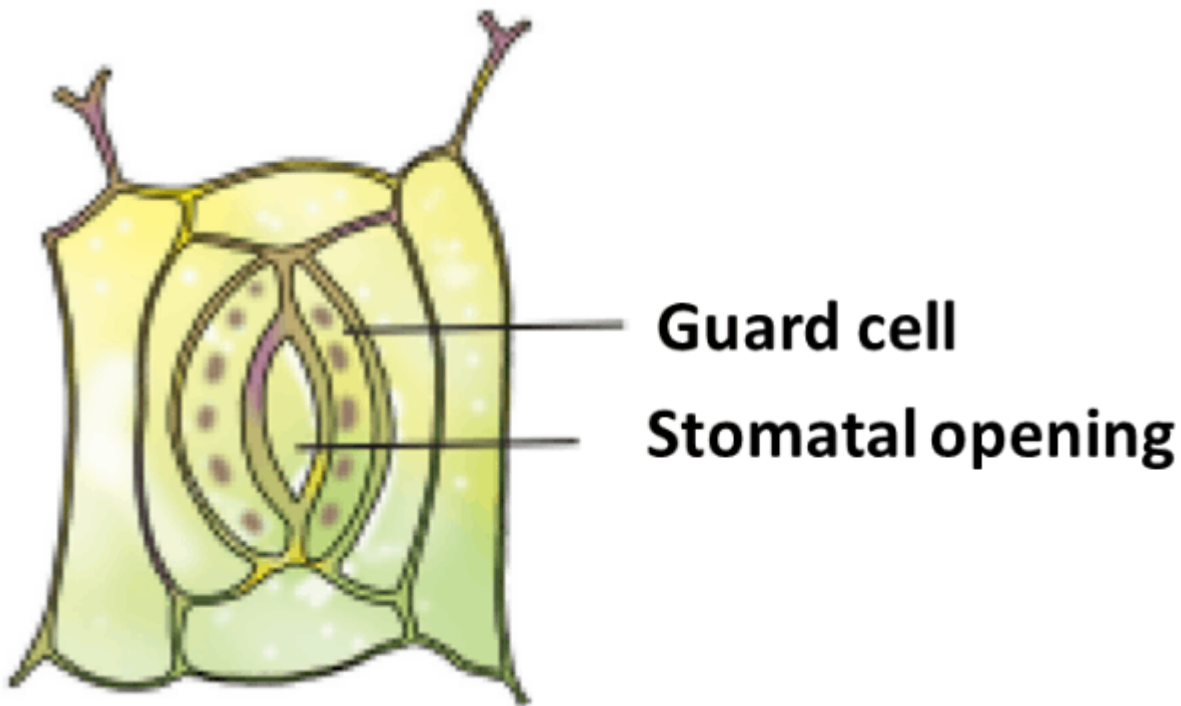
**Stomata opening, guard cell**

Visit examrace.com for free study material, doorsteptutor.com for questions with detailed explanations, and "Examrace" YouTube channel for free videos lectures



*Stomata Opening, Guard Cell (Q)*

**Answer:**



*Stomata Opening, Guard Cell (A)*

### LONG ANSWER QUESTIONS

**Question 17:**

Match the organisms given in **Column I** with their mode of nutrition given in **Column II**.

#### Column I

Mango tree

Mushroom

Pitcher plant

Cuscuta

#### Column II

Insectivorous plant

Heterotroph

Autotroph

Saprophyte

Visit examrace.com for free study material, doorsteptutor.com for questions with detailed explanations, and "Examrace" YouTube channel for free videos lectures

Elephant

Parasitic

*MATCH THE COLUMN I AND COLUMN II (Q)*

**Answer:**

**Column I**

**Column II**

Mango tree

**iii** Autotroph

Mushroom

**iv** Saprophyte

Pitcher plant

**i** Insectivorous plant

Cuscuta

**v** Parasitic

Elephant

**ii** Heterotroph

*MATCH THE COLUMN I AND COLUMN II (A)*